

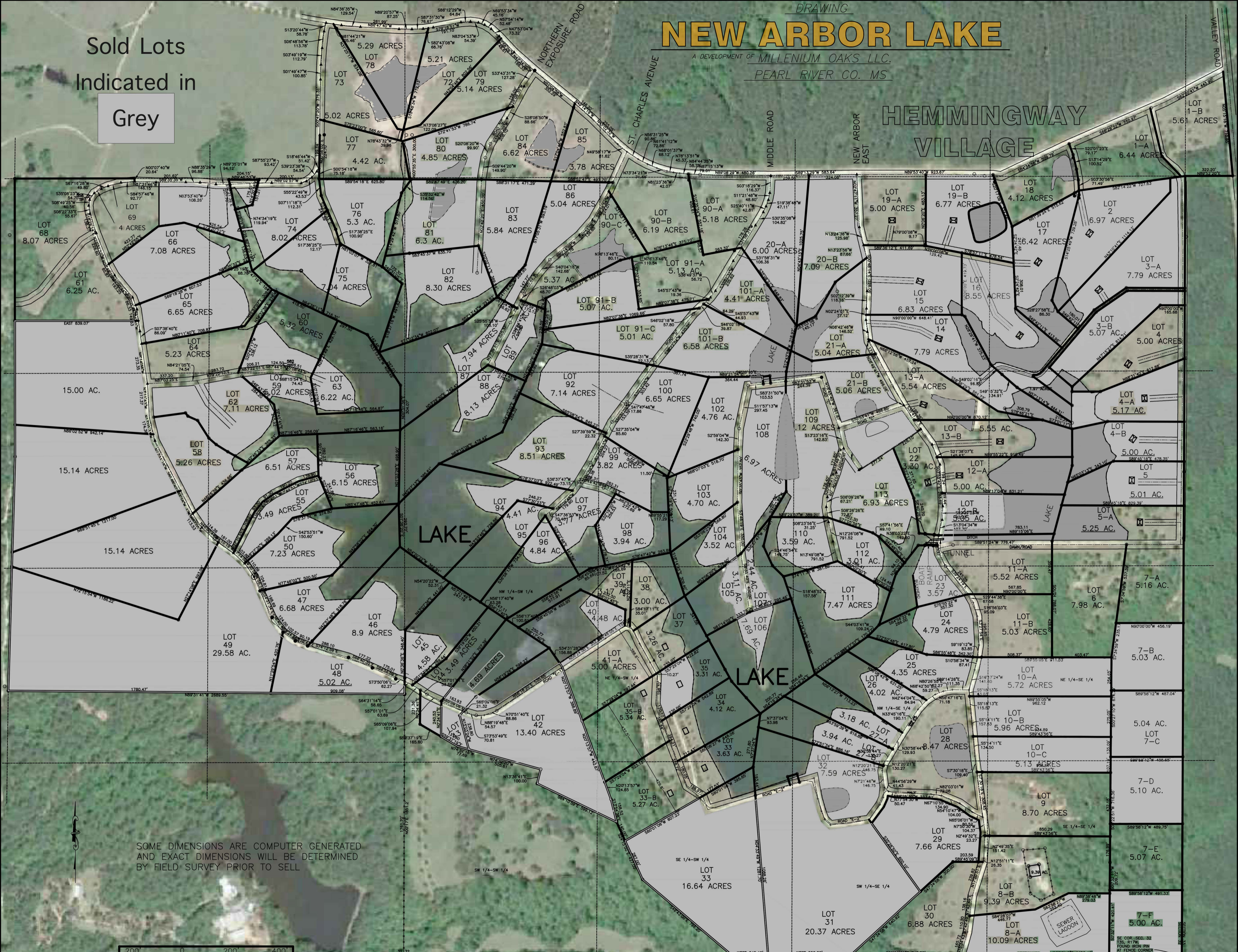
# NEW ARBOR LAKE

A DEVELOPMENT OF MILLENIUM OAKS LLC.  
PEARL RIVER CO. MS.

DRAWING

Sold Lots  
Indicated in  
Grey

## HEMMINGWAY VILLAGE



SOME DIMENSIONS ARE COMPUTER GENERATED  
AND EXACT DIMENSIONS WILL BE DETERMINED  
BY FIELD SURVEY PRIOR TO SELL



CHECKED BY:  
DRAWN BY: TIM LAWRENCE

TELEPHONE #  
(601) 928-7390  
FAX #  
(601) 928-5526

DRAWN: O'NEAL-BOND ENGINEERING, INC.  
9/26/2002 P.O. BOX 369 WIGGINS MS. 39577

SE COR. SEC. 32  
T35. R17W  
FOUND IRON PIN  
AT FENCE CORNER